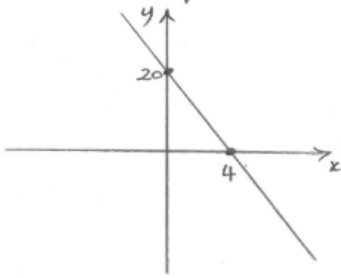


1.

Find the equation:

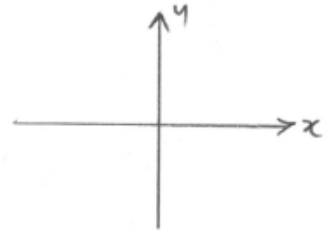


2.

A line passes through $(2, 8)$ and $(-2, -12)$
What is its equation?

3.

Sketch
 $3x = y - 12$
showing all intercepts



4.

Solve:

$$\frac{y+2}{3} = 6$$

Solve:

$$\frac{x}{5} + \frac{2x}{4} = x - 3$$

6.

Solve:

$$\begin{aligned} y &= 3x + 1 \\ x + y &= 9 \end{aligned}$$

5.

7.

Solve:

$$\begin{aligned} 2x + y &= -1 \\ x + y &= 2 \end{aligned}$$

8.

Solve:

$$\begin{aligned} 5x - 2y &= 31 \\ x - y &= 11 \end{aligned}$$

9.

How many units is
it from:
 $(-5, -7)$ to $(-1, 3)$

* 2 dec. places.