

1. Calculate mean

26 29 25 23 29
31 26 22 26 30

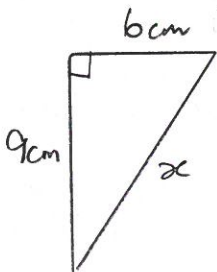
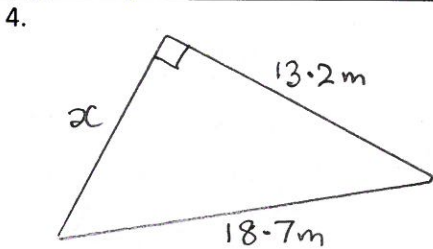
2. Calculate mean

x	f	
13	5	
14	8	
15	12	
16	7	
TOT		

3. Estimate mean

x	f		
15-	4		
25-	8		
35-	19		
45-	16		

+ or - skewed?



5. Simplify:

$$\sqrt{20} =$$

$$\sqrt{50} =$$

$$\sqrt{72} =$$

$$\sqrt{18} + \sqrt{50} =$$

$$\sqrt{3} \times \sqrt{8} =$$

6. Simplify:

$$2(x+5) + 3(x-4)$$

=

=

$$(x+5)(2x+1)$$

=

=

7. My car goes 84km on 7 litres of petrol. How far will it go on 20 litres?

8. $9 + 2 \times 3 =$

$$\sqrt{16} - 3^2 =$$

$$8 + 2^3 \times 3 =$$

$$-12 + 5 =$$

$$3 - 14 =$$

$$\frac{1}{2} - \frac{2}{3} =$$

9. It takes 3 people 4 days to build a boat. How long will it take 5 people to build the same boat?