

Homework 7 Term 2 Sheet 7

1.

$$6 \times 9 =$$

$$12 \times 7 =$$

$$45 \div 5 =$$

$$1.2 \times 10 =$$

$$47.3 \div 10 =$$

$$738 \div 100 =$$

$$924 \times 100 =$$

2. Convert

$$46 \text{ cm} = \text{---} \text{ mm}$$

$$23 \text{ m} = \text{---} \text{ cm}$$

$$49.3 \text{ cm} = \text{---} \text{ mm}$$

$$927 \text{ mm} = \text{---} \text{ m}$$

$$4320 \text{ M} = \text{---} \text{ km}$$

$$12.5 \text{ cm} = \text{---} \text{ mm}$$

3. If $a = 6$

$$a + 8 =$$

$$36 \div a =$$

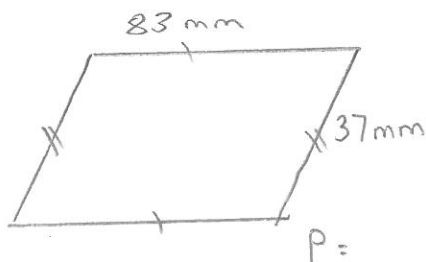
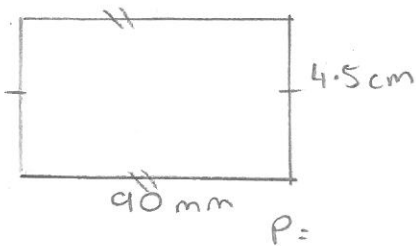
$$42 - a =$$

$$a^2 =$$

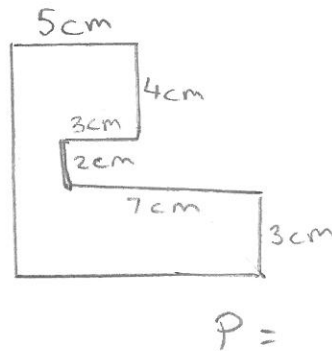
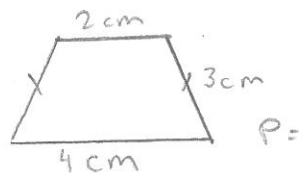
$$\sqrt{10+a} =$$

$$a \times -3 =$$

4. Perimeter



5. Perimeter

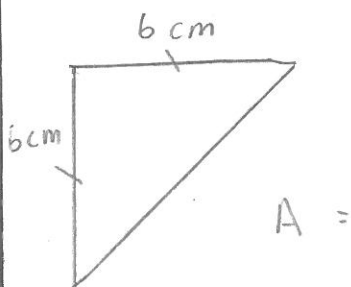
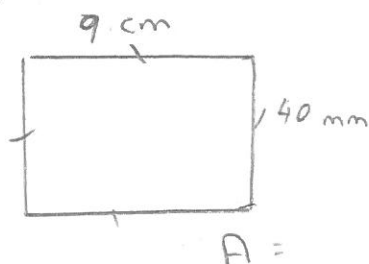


6. Perimeter

Travis is building a rectangular house - 20 meters long and 10 meters wide. What is the perimeter of his house?

For every meter of the perimeter, he needs 100 bricks. How many bricks will his house need?

7. Area



8. Evaluate

$$-6 + -3 =$$

$$12 - -2 =$$

$$2^2 - -6 =$$

$$48 + +3 =$$

$$50 \div (2 + +3) =$$

9. What fraction is shaded?

